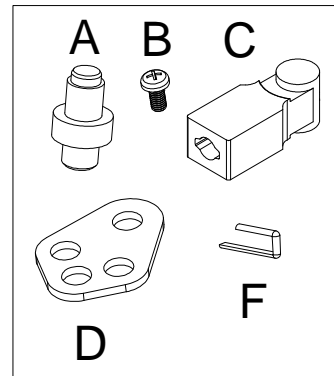


INSTALLATION INSTRUCTIONS

NOTICE TO BOAT MANUFACTURER OR INSTALLER: THE FOLLOWING INSTRUCTIONS CONTAIN IMPORTANT SAFETY INFORMATION AND MUST BE FORWARDED TO THE OWNER OF THE VESSEL

Content of the kit:

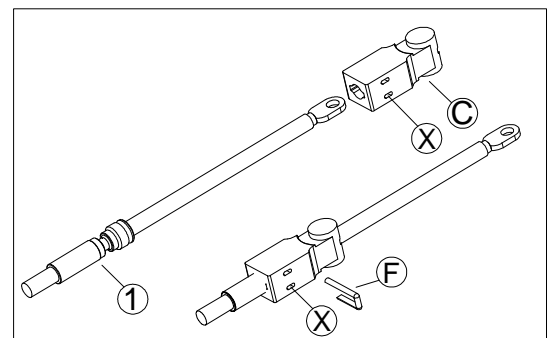
kit K65
A pin (2x);
B screw M5x12 (2x);
C connector (2x);
D retain plate (2x);
F split pin (2x);



Kit K65 for Ultraflex cables C36 and MACH 36 to use with the Two Lever B322-B324.

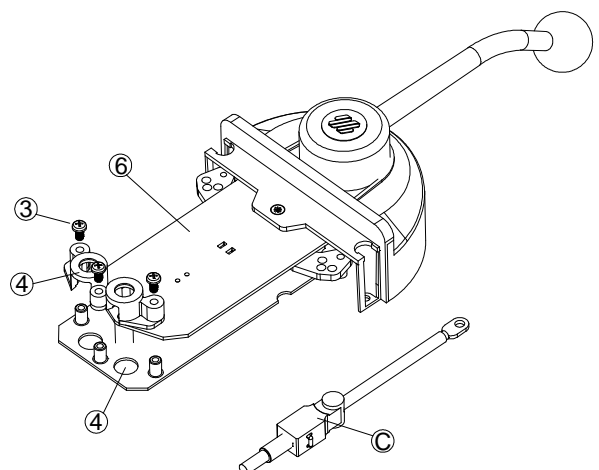
STEP 1 Connector Installation on the Cable.

- Insert the connector (C) on the end fitting (1) and align the slot (X) with the groove of the end fitting.
- Insert the split pin (F) in the slot (X) of the connector and fold its end.

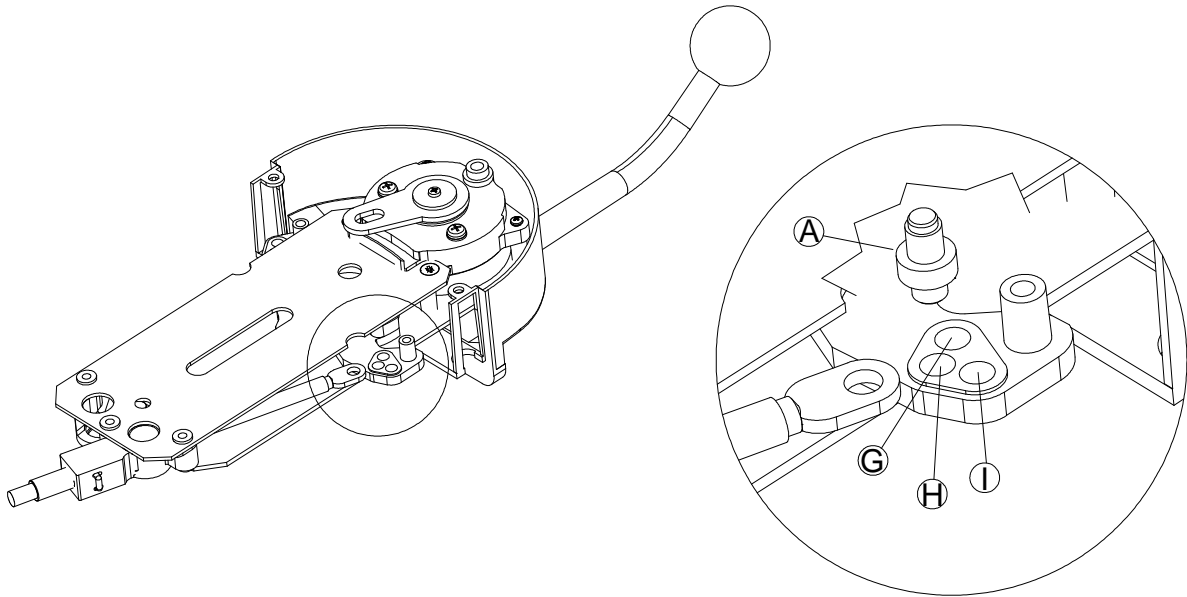


STEP 2 Control Lever Shift And Throttle Cable Connection

- After separating the two boxes, install the shift and throttle cable: connect the shift cable to the box of the black lever knob, the throttle one to the box of the red lever knob.
- Remove the cable clamp (4) from the plate (6) loosening the screws (3).
- Mount the cable making sure the cylinder of the connector (C) will be placed inside the plate hole (5).
- Re-mount the cable clamp (4) on the plate (6) aligning the cylinder of the connector (C) with the hole of the cable clamp.
- Fix the cable clamp (4) to the plate (6) with the screws (3).

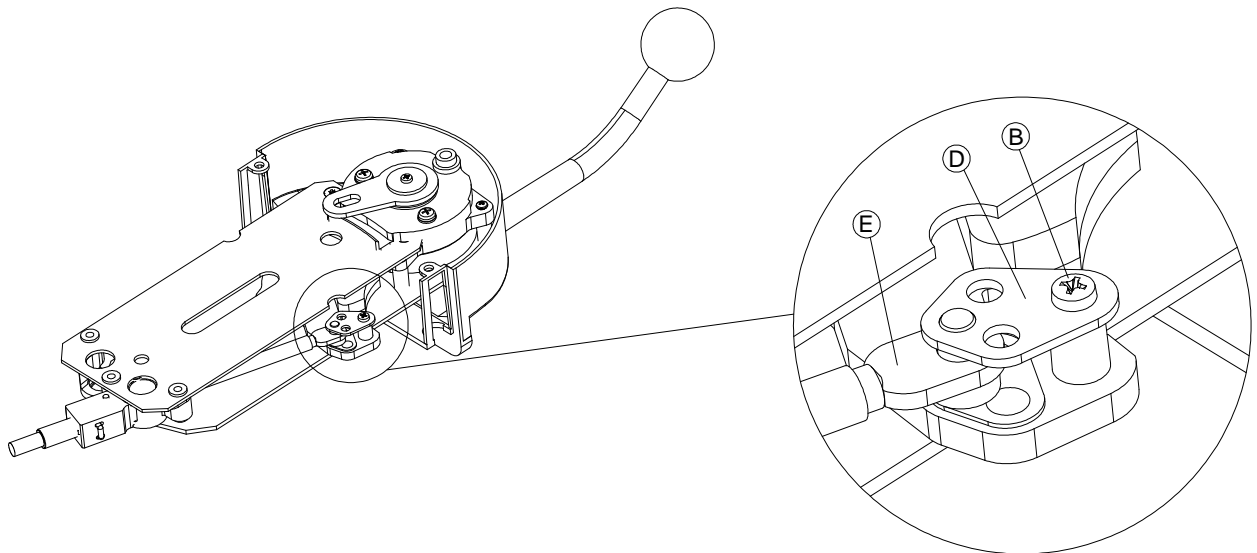


- Turn upside down the control box (inner mechanism turned downside).
- Put the pin **(A)** on one of the three holes **(G)**, **(H)** or **(I)** of the lever **(9)**; choose the hole according to the stroke of the cable:



HOLE	G	H	I
STROKE [inch]	2.67	3	3.22

- Engage the rod end **(E)** on the pin **(A)**.
- Mount the plate **(D)** in the way shown in the picture and fix it with the screw **(B)** torque 2.5 Nm (17.5-22 lbin).



Technical Support

For any information or for assistance with unusual applications please contact our technical support personnel.

Ultraflex S.p.a. reserve the right to change these instructions at any time, with regard to printing errors and/or following system up-dates.

All the trademarks, abbreviations and drawings are the property of Ultraflex S.p.a. and therefore reproduction of the information printed in this manual, whether in full or in part, is prohibited.

Warranty

ULTRAFLEX guarantees their products are manufactured with proper workmanship and free of any manufacturing or material flaws.

This warranty applies for a period of two years running from the date of manufacture of the products, except in those cases in which they are installed and used on work boats or in any case on craft used for commercial purposes, in which case the warranty is limited to one year running from the date of manufacture. This warranty is limited to replacement or repair, free of charge, of parts returned carriage paid to ULTRAFLEX within the above terms and for which the materials and/or manufacture are found to be faulty.

The warranty excludes any other direct or consequential damage. Specifically, ULTRAFLEX exclude from the warranty any liability on their part (over and above replacement or repair of the faulty parts in accordance with the aforementioned terms and conditions) when a failure to function or malfunctioning of their products is attributable to incorrect installation or to negligent or improper use.

WARNING:

This warranty does not cover Ultraflex products installed on racing boats or those used in a competitive framework.

Ultraflex S.p.a.

Via Crose, 2
16015 CASELLA (GE) - ITALY
Marketing Departement
Via Milite Ignoto, 8a
16012 Busalla (GE) – ITALY
Tel: +39.010.9620310
Fax: +39.010.9620333
Email: ut@ultraflexgroup.it
<http://www.ultraflexgroup.it>

For North, Central and South America:

Uflex USA

6442 Parkland Drive
Sarasota, FL 34243
Tel: 941.782.1867
Fax: 941.360.9171
Email: uflex@uflexusa.com
<http://www.uflexusa.com>